

Prepared by: Zieske Land Surveying, Inc. Address: Box 94, Windom, MN 56101 Phone: (507) 831-0100

UNITED STATES PUBLIC LAND SURVEY CORNER CERTIFICATE FOR

Land survey monuments situated in Section 26, Township 106 North, Range 40 West, of the Fifth Principal Meridian, Murray County, Minnesota..

Previously recorded in N/A in County Recorder's Office.

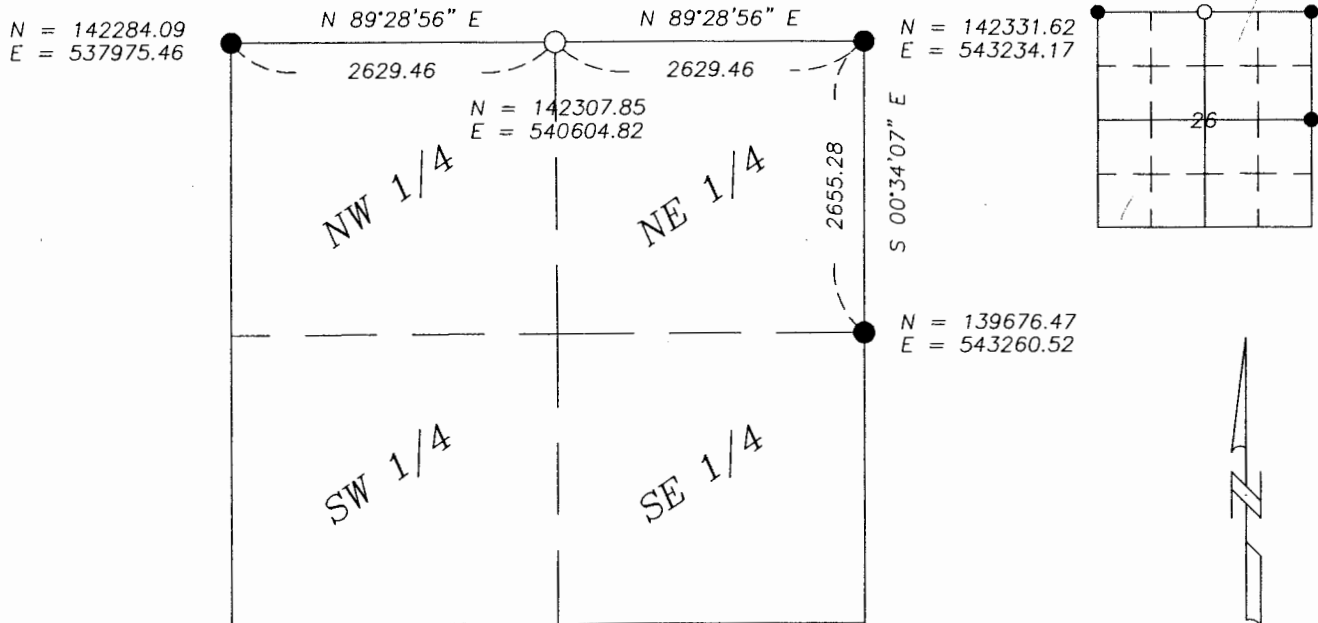
(Show reason for preparing this certificate, the evidence and detailed procedure used in establishing the corner position & monumentation found or placed.)

MONUMENT DESCRIPTION AND REMARKS: On Oct. 12, 2006 we dug with a backhoe for the following:

E 1/4 Corner found a 7" X 12" stone 1.5' below surface and set 1" Iron Pipe with survey cap 23008 over top center of stone; NE Corner found a 6" X 12" stone 2.5' below surface and set 1" Iron Pipe with survey cap 23008 over top center of stone; N 1/4 Corner dug and found no evidence of corner, set 1" Iron Pipe with survey cap 23008 midway and on line between NW Section Corner and NE Section Corner as per PLS instructions.

PLAN-VIEW

MURRAY COUNTY COORDINATES



I hereby certify that this land surveying document was prepared and related survey work was performed by me or under my direct supervision and that I am a duly licensed Land Surveyor under the laws of the State of Minnesota.

Perry L. Zieske 10-18-06
 Signature Date

Perry Zieske
 License number 23008

Sheet 1 of 1

Corners to be Indexed

Corners	Section	Township	Range
N 1/4	26	106	40
NE	26	106	40
E 1/4	26	106	40